

SG-545 直流减速电机 DC GEAR MOTOR Series SGMADA®



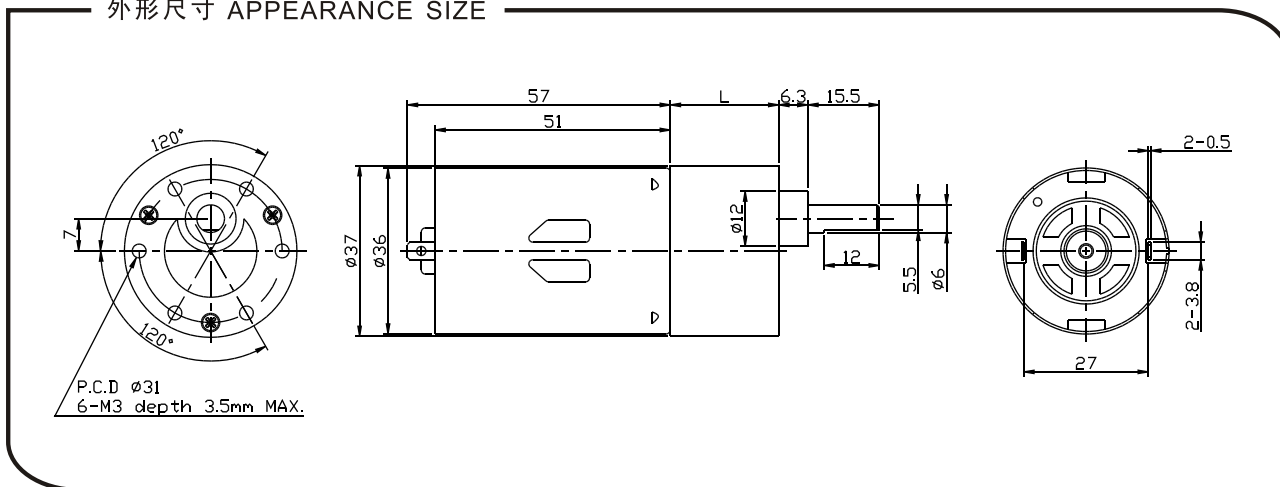
电压/Main voltage: 3VDC、6VDC、9VDC、12VDC、24VDC、36VDC

用途/Typical applications: 自动百叶窗、自动售货机、点钞机、装订机、移动电视机架、包装机、舞台灯光、纸币机、办公设备、家用电器、执行器
Auto shutter, Money detector, Binding machine, Automatic TV rack, Packing bank note machine, Stage Lighting, Tissue machine, Office equipment, Household appliances, Automatic actuator.

重量/Weight: 300~350g/pcs(approx)

包装外形尺寸/Packing details: CTN size: 27.5X26XH22.5cm 40pcs/CTN G.W.14kgs

外形尺寸 APPEARANCE SIZE



齿轮箱数据 Gearbox data

减速箱级数 Number of stages	2、3 减速比 Stages reduction	4、5 减速比 Stages reduction	6、7 减速比 Stages reduction
减速比 Reduction ratio	6、10; 20、30	60、90; 120、180、270	360、540、810
齿轮箱长度 Gearbox length "L" mm	23.5	26 28	30
最大运转力矩 Max. Running torque	2kgf.cm	10kgf.cm	10kgf.cm
最大破坏力矩 Max. Gear breking torque	8kgf.cm	30kgf.cm	30kgf.cm
最高齿轮效率 Max. Gearing efficiency	81%; 73%	65%; 59%	53%; 48%

其它减速比请致电或邮件给我司技术部 Other reduction ratio please telephone or e-mail to our engineering department.

马达参数 Motor data

马达型号 Motor Model	电压 Rated Volt. V	空载 No load		负载 Load torque				堵转 Stall torque	
		电流 Current	转速 Speed	电流 Current	转速 Speed	扭矩 Torque	输出功率 Output power	扭矩 Torque	电流 Current
		mA	r/min	mA	r/min	gf.cm	W	gf.cm	MA
SG-545123000	12	≤110	3000	≤450	2200	100	2.2	400	1800
SG-545124500	12	≤220	4500	≤800	3300	150	4.9	600	3000
SG-545126000	12	≤350	6000	≤1500	4500	200	9.0	800	5500
SG-545243000	24	≤60	3000	≤230	2200	100	2.2	400	900
SG-545244500	24	≤110	4500	≤400	3300	150	4.9	600	1500
SG-545246000	24	≤150	6000	≤750	4500	200	9.0	800	3000

- 这张表格只列出部分电机参数，想了解更多具体参数请参照94页。
- This table lists some motors parameters, otheers please refer to specific parameters of Page 94 .
- 马达和齿轮箱装配成减速电机后输出扭矩 = 马达扭矩X减速比X齿轮效率;输出转速 = 马达转速 / 减速比 .
- After connecting motor and gearbox which is named gearmotor the output torque: motor torque X reduction ratio X gearing efficiency; output speed: motor speed/reduction ratio .