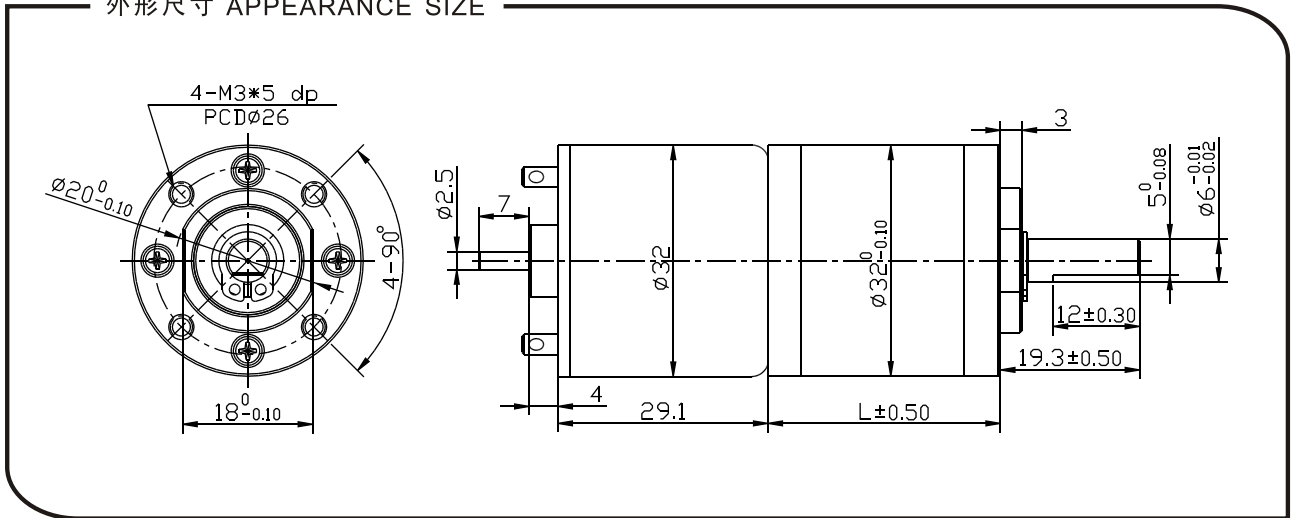




用途/Typical applications: 遥控窗帘、微型数控设备、中央空调调节阀、机器人、柔市机、舞台灯光、电脑座便器专用阀门电机、电动广告、可调角度望远镜、办公设备、家用电器、执行器

Auto shutter, Micro CNC equipment, Central air-conditioning valve, Robots, Towel dispensers, Limelight, Automatic closetbowl special valve, Electric advertising, Angular telescope, Office equipment, Household appliances, Automatic actuator.

外形尺寸 APPEARANCE SIZE



齿轮箱数据 Gearbox data

减速箱级数 Number of stages	1 减速比 Stages reduction	2 减速比 Stages reduction	3 减速比 Stages reduction	4 减速比 Stages reduction	5 减速比 Stages reduction
减速比 Reduction ratio	4、4.75	16、19、22.5	64、76、 <b>90</b> 、107	256、304、361、428、509	1024、1216、1444、1715、2036、2418
减速比 Reduction ratio	20.7	26.4	32.2	38.0	43.8
最大运转力矩 Max. Running torque	5.0kgf.cm	10.0kgf.cm	25kgf.cm	25kgf.cm	25kgf.cm
最大破坏力矩 Max. Gear breking torque	15.0kgf.cm	30.0kgf.cm	75kgf.cm	75kgf.cm	75kgf.cm
最高齿轮效率 Max. Gearing efficiency	90%	81%	73%	65%	59%

其它减速比请致电或邮件给我司技术部 Other reduction ratio please telephone or e-mail to our engineering department.

马达参数 Motor data

马达型号 Motor Model	电压 Rated Volt. V	空载 No load		负载 Load torque				堵转 Stall torque	
		电流 Current	转速 Speed	电流 Current	转速 Speed	扭矩 Torque	输出功率 Output power	扭矩 Torque	电流 Current
		mA	r/min	mA	r/min	gf.cm	W	gf.cm	mA
GR-124500	12	≤90	4500	≤220	3589	67.6	2.5	358	1500
GR-127000	12	≤140	7000	≤700	5647	79.7	4.6	472	3030
GR-244500	24	≤50	4500	≤160	3539	60	2.1	281	596
GR-246700	24	≤70	6700	≤280	4500	78.4	4.23	381	1140

- 马达和齿轮箱装配成减速电机后输出扭矩 = 马达扭矩X减速比X齿轮效率;输出转速 = 马达转速 / 减速比 .
- After connecting motor and gearbox which is named gearmotor the output torque: motor torque X reduction ratio X gearing efficiency; output speed: motor speed/reduction ratio .