

WGM370 直流减速电机 DC GEAR MOTOR Series **SGMADA**®



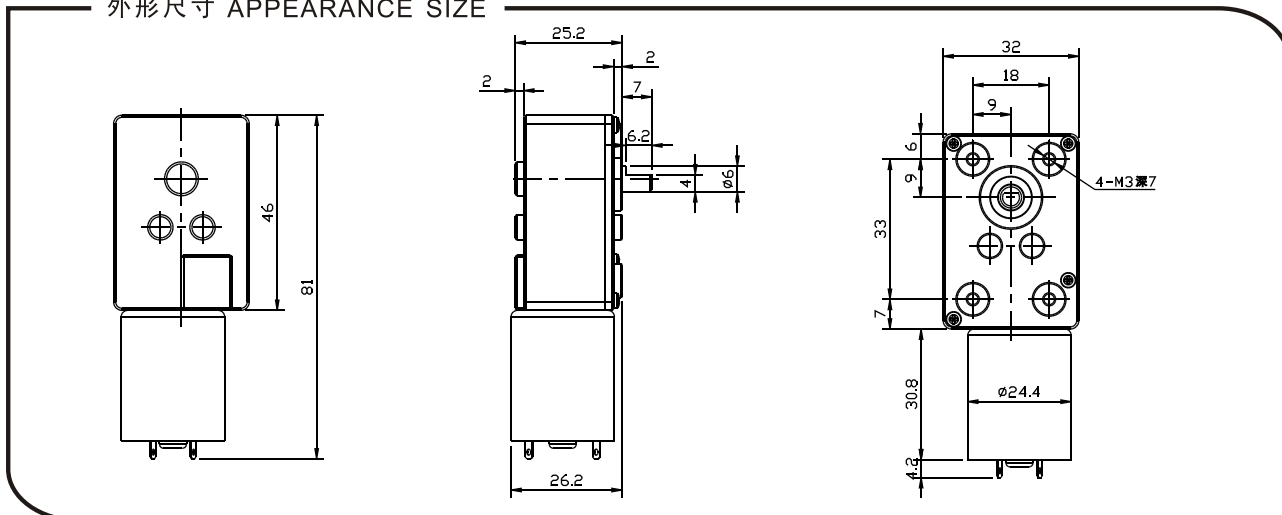
电压/Main voltage: 3VDC、6VDC、9VDC、12VDC、24VDC

用途/Typical applications: 垃圾处理器、水表IC卡、礼品玩具、电子锁、指纹识别机、光学设备、读卡机、机器人、纸巾机、办公设备、家用设备、执行器 Garbage disposers, Water IC card, Toys and gifts, Kind of finger-electroni locks, Optical equipment, Card conveyors, Robots, Towel dispensers, Office equipment, Household appliances, Automatic actuator.

重量/Weight: 150~200g/pcs(approx)

包装外形尺寸/Packing details: CTN size: 41X26XH23cm 100pcs/CTN G.W.15kgs

外形尺寸 APPEARANCE SIZE



齿轮箱数据 Gearbox data

减速箱级数 Number of stages	3 减速比 Stages reduction	4 减速比 Stages reduction	5 减速比 Stages reduction
减速比 Reduction ratio	123、276	552、828	1656、2484
最大运转力矩 Max. Running torque	2kgf.cm	5kgf.cm	10kgf.cm
最大破坏力矩 Max. Gear breking torque	6kgf.cm	15kgf.cm	30kgf.cm
最高齿轮效率 Max. Gearing efficiency	73%	65%	59%

其它减速比请致电或邮件给我司技术部 Other reduction ratio please telephone or e-mail to our engineering department.

马达参数 Motor data

马达型号 Motor Model	电 压 Rated Volt. V	空 载 No load		负 载 Load torque				堵 转 Stall torque	
		电 流 Current	转 速 Speed	电 流 Current	转 速 Speed	扭 矩 Torque	输出 功率 Output power	扭 矩 Torque	电 流 Current
		mA	r/min	mA	r/min	gf.cm	W	gf.cm	MA
WGM370063000	6	≤15	3000	≤100	2200	15	0.33	60	600
WGM370064500	6	≤25	4500	≤270	3300	24	0.8	90	1200
WGM370066000	6	≤40	6000	≤500	4500	30	1.4	120	1900
WGM370123000	12	≤15	3000	≤55	2200	15	0.33	60	280
WGM370126000	12	≤20	6000	≤250	4500	30	1.4	120	1200
WGM370246000	24	≤30	6000	≤130	4500	30	1.4	120	550

• 马达和齿轮箱装配成减速电机后输出扭矩 = 马达扭矩X减速比X齿轮效率;输出转速 = 马达转速 / 减速比 .

• After connecting motor and gearbox which is named gearmotor the output torque: motor torque X reduction ratio x gearing efficiency; output speed: motor speed/reduction ratio .